

Hirose Korea B to W Connector

KN16-Series

1. Characteristic of Products -----page 2

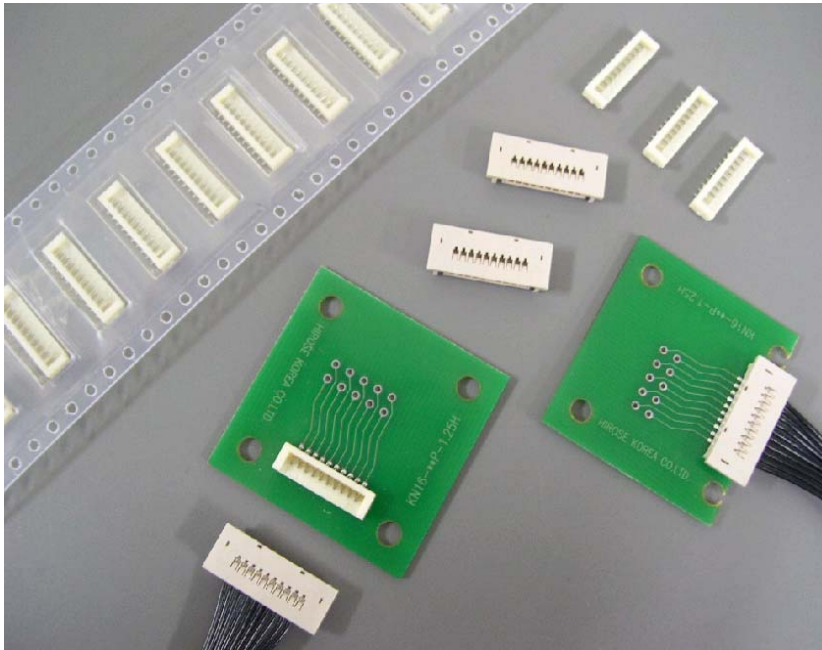
2. Specifications & Formation of Products -----page 3~4

3. Details of Products -----page 5~6

No.	Products Name	The NUMBER of Pins	Specification	page
1	KN16-**P-1.25H	10,12	PITCH 1.25mm HEIGHT: 2.4mm	5
2	KN16-**S-1.25C	10,12	PITCH 1.25mm HEIGHT: 3.2mm	6
3	KN16A-3P-2.5H	3	PITCH 2.5mm HEIGHT: 2.4mm	7
4	KN16A-3S-2.5C	3	PITCH 2.5mm HEIGHT: 3.2mm	8
5	KN16-2830SCF	-	AWG#28~#30	8

4. Reflow profile (Lead-free)-----page 9

KN16- series



■ Characteristic.

1. Excellent Contact Confidence

The Contact method between header contact and crimp contact is composed of **4point of contact methods and a terminal lock of method**

2. Coupling property of products is excellent so that is easy to work

and is stable in circumstance with vibration and impact.

3. The inside of Housing combines the outside of the case

therefore it has a excellent operation, and no a mistake insertion when combines the case with housing

4. It's a angle type and also is possible to assemble with a vertical type.

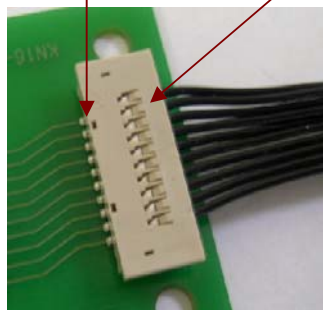
Besides It's easy to assemble in limited space.

5. RoHS Compliant Suitable.

6. Applicable wire : AWG#28~#30

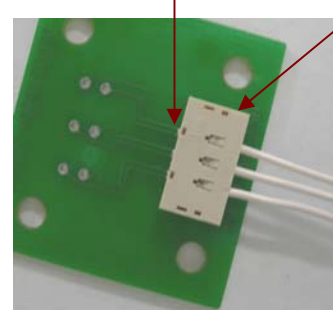
KN16 - **P -1.25H

KN16 - **S -1.25C



KN16A - 3P -2.5H

KN16A -3S -2.5C



■ Applications

1) LCD , LCD-TV , PDP , PDA etc.. DISPLAY

2) LED for illumination

3) Industry machinery and so on

■ Standards of product.

1) KN16-SERIES

Rating	Current 1A DC	Operating temperature range	Storage temperature range
	Voltage 100V AC	- 30 °C ~ + 80 °C	- 40 °C ~ + 60 °C

Item	Specification	Condition
1.Insulation Resistance	500MΩ Min	100V DC
2.Withstand voltage	Neither shot or insulation beakdown	300V AC for 1 minute
3.Contact Resistance	30mΩ Max	AC 20mV
4.Insertion and Withdrawal Forces	.Insertion Force : 68.2N MAX Withdrawal Forces :6.8N MIN	Measured by applicable connector
5.Mechanical operation	50 Time insertions and extractions.	Contact Resistance :50mΩ. No damage , Crack and looseness of parts
6.Moisture Resistance	Temperature : 60±2 °C	Contact Resistance :50mΩMax Insulation Resistance : 500MΩ Min No damage , Crack and looseness of parts
	Relative Humidity : 90~95%	
	Duration : 96Hr	
7.Resistance to Soldering heat	Reflow : 230 °C MIN. 30~60sec, 250 °C 3sec	No deformation of components affecting performance.

2) KN16A-SERIES

Rating	Current 1A DC	Operating temperature range	Storage temperature range
	Voltage 220V AC	- 30 °C ~ + 80 °C	- 40 °C ~ + 60 °C

Item	Specification	Condition
1.Insulation Resistance	500MΩ Min	100V DC
2.Withstand voltage	Neither shot or insulation beakdown	660V AC for 1 minute
3.Contact Resistance	30mΩ Max	AC 20mV
4.Insertion and Withdrawal Forces	.Insertion Force : 68.2N MAX Withdrawal Forces :6.8N MIN	Measured by applicable connector
5.Mechanical operation	50 Time insertions and extractions.	Contact Resistance :50mΩ. No damage , Crack and looseness of parts
6.Moisture Resistance	Temperature : 60±2 °C	Contact Resistance :50mΩMax Insulation Resistance : 500MΩ Min No damage , Crack and looseness of parts
	Relative Humidity : 90~95%	
	Duration : 96Hr	
7.Resistance to Soldering heat	Reflow : 230 °C MIN. 30~60sec, 250 °C 3sec	No deformation of components affecting performance.

※ Since Satisfy with Reflow Temperature MAX 250 °C, Fit for use at Lead-free Soldering.

■ Plating specifications and row materials by parts

PART		MATERIAL	REMARK
HEADER (PLUG)	CASE	POLYAMIDE	KN16 : Natural / UL94V-0 KN16A : White / UL94V-0
	CONTACT	PHOSHOR BRONZE	Tin plated (Under NiP)
	METAL FITTING	PHOSHOR BRONZE	Tin plated (Under NiP)
CRIMP HOUSING	HOUSING	PHOSHOR BRONZE	Tin plated (Under NiP)
CRIMP CONTACT	CRIMP CONTACT	POLYAMIDE	UL94V-0 / Natural

■ Formation of part number.

● Connector

KN16 **#** - ****** **P** - ****** **H**
 ① ② ③ ④ ⑤ ⑥

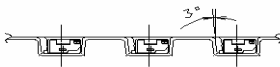
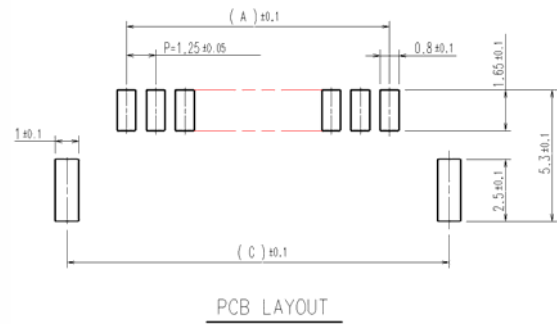
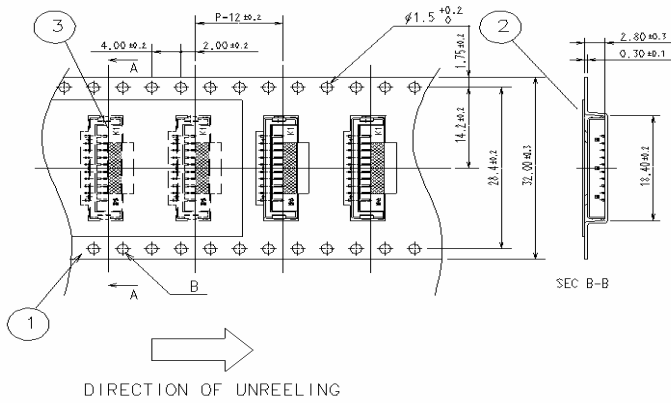
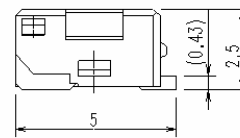
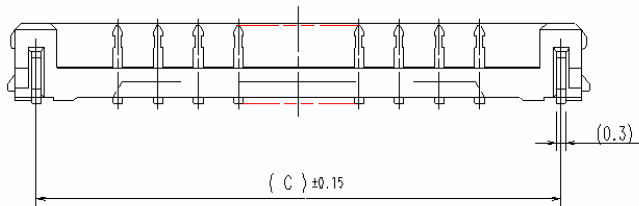
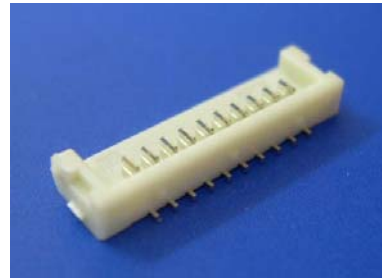
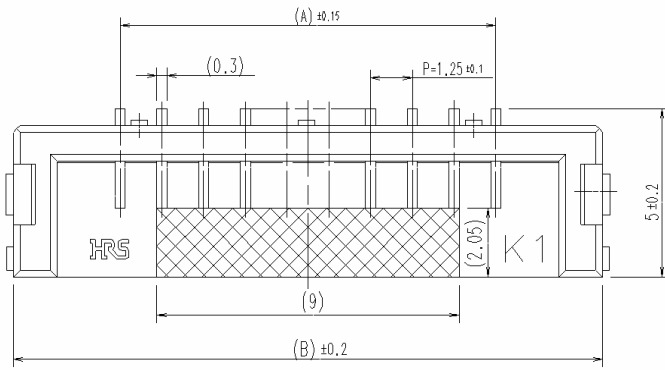
①	Serial Name	KN30
②	Blank	Pitch : 1.25 mm
	A	Pitch : 2.5 mm
③	Number of contact	KN16 :10,12Pin , KN16A :3Pin
③	Contact Division	P : Plug S : SOCKET
⑤	Contact Pitch	1.25mm ,2.5mm
⑥	Contact type	H(SMT : horizontal mount type)
		C(Crimping Housing)

● Contact

KN 16 - **2830** **SCF**
 ① ②

①	Applicable cable size	2830 : AWG 28~30
②	Packing Type	SCF : Socket contact/reel

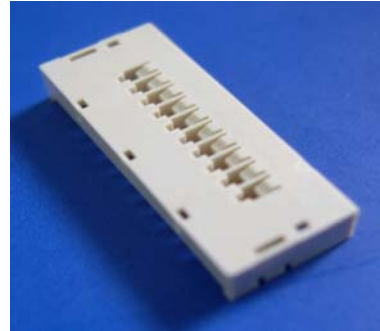
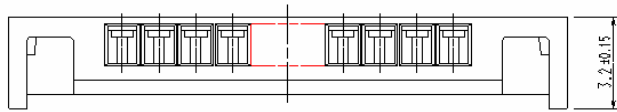
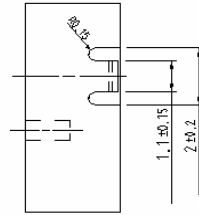
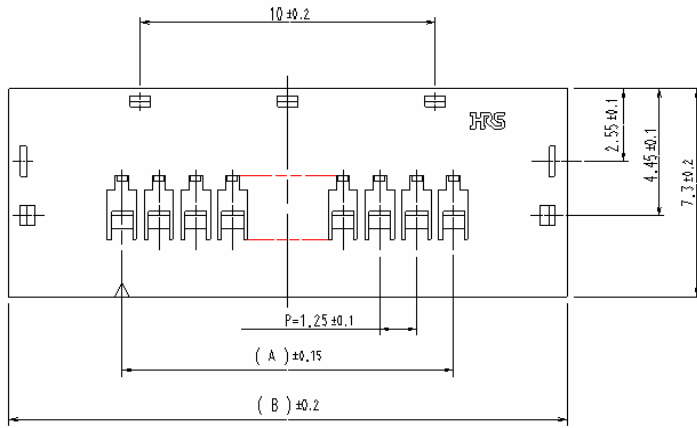
■ KN16-**P-1.25H



	A	B	C
10 PIN	11.25mm	17.64mm	16.34mm
12 PIN	13.75mm	20.14mm	18.84mm

Product Name	PITCH	Package	Remark
KN16-**P-1.25H	1.25mm	Emboss Tape	1,500ea/Reel

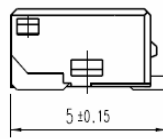
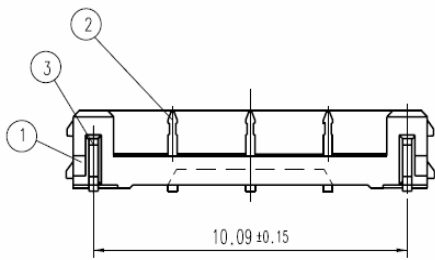
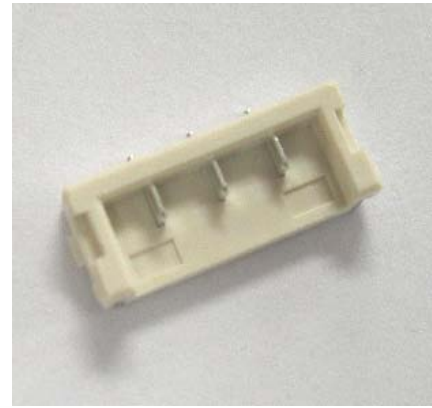
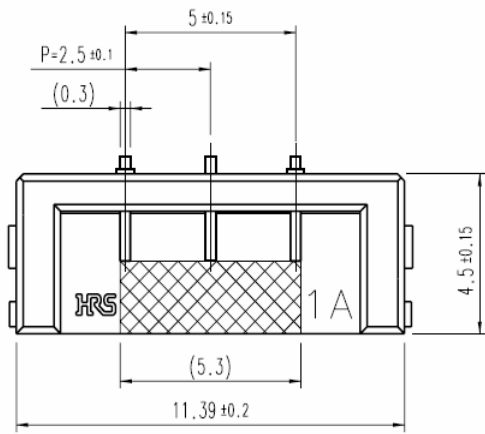
■ KN16-**S-1.25C



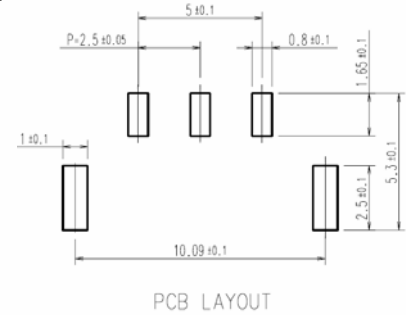
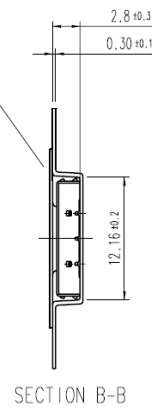
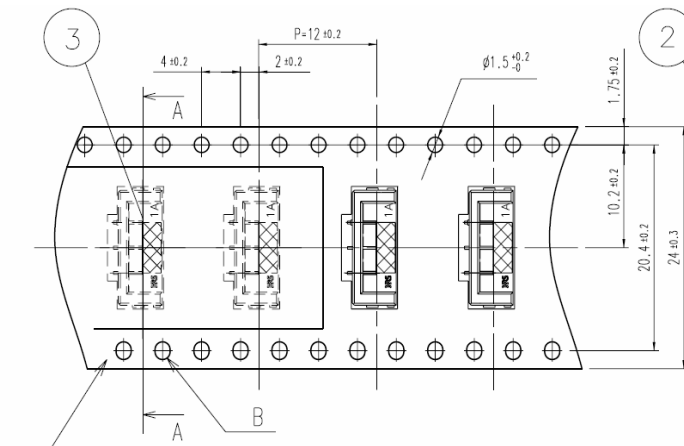
	A	B
10 PIN	11.25mm	18.94mm
12 PIN	13.75mm	21.44mm

Product Name	Pitch	Package	Remark
KN16-**S-1.25C	1.25mm	Pack/BOX	500ea/Pack

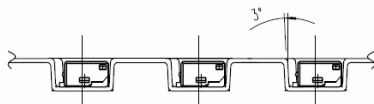
■ **KN16A-3P-2.5H**



1	절연 CASE
2	CONTACT
3	METAL FITTING

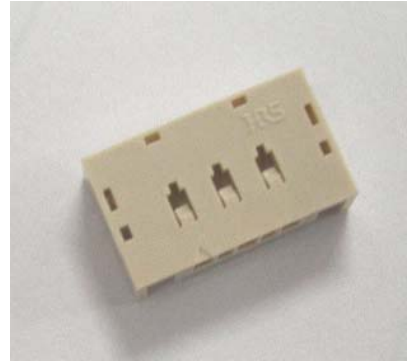
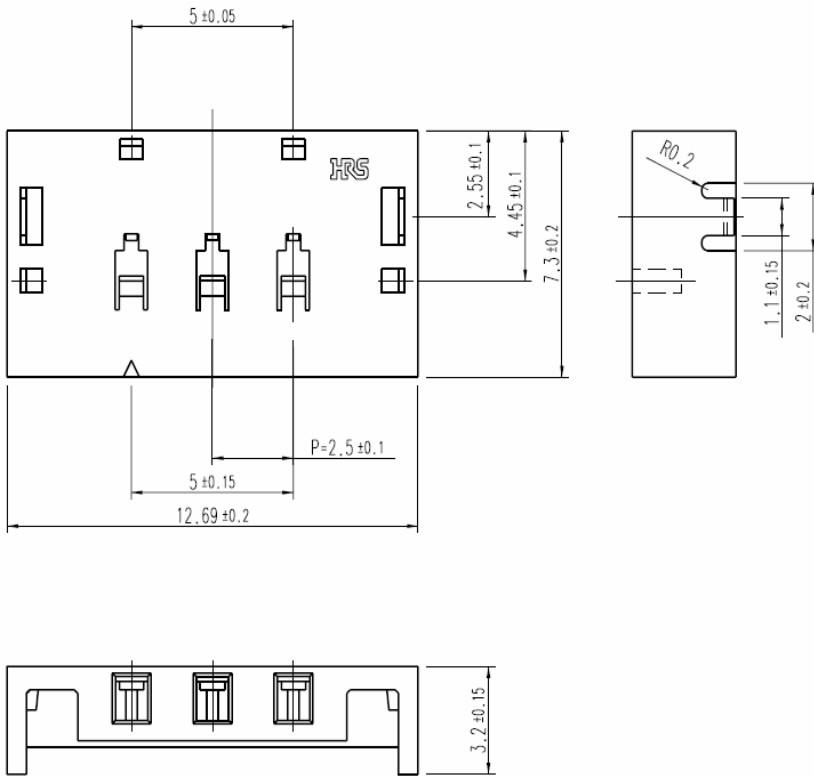


DIRECTION OF UNREELING



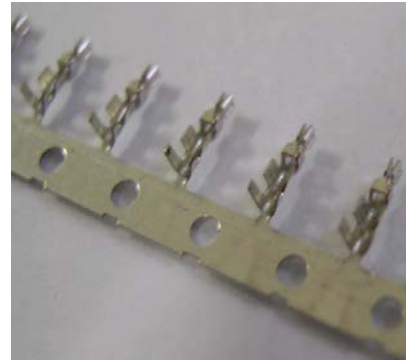
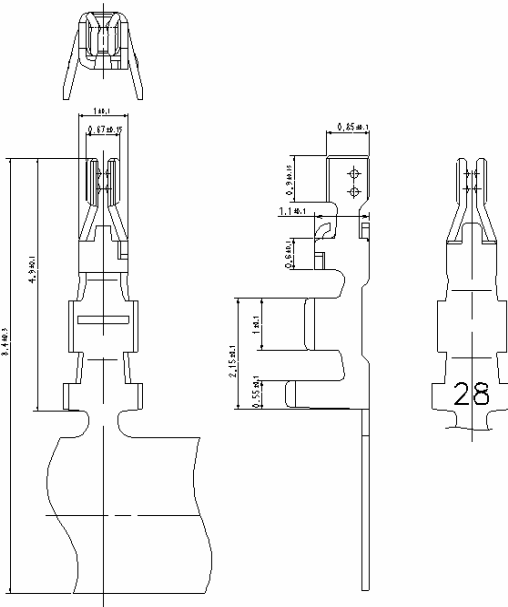
Product Name	PITCH	Package	Remark
KN16A-3P-2.5H	2.5mm	Emboss Tape	1,500ea/Reel

■ KN16A-3S-2.5C



Product Name	Pitch	Package	Remark
KN16A-3S-1.25C	2.5mm	Pack/BOX	500ea/Pack

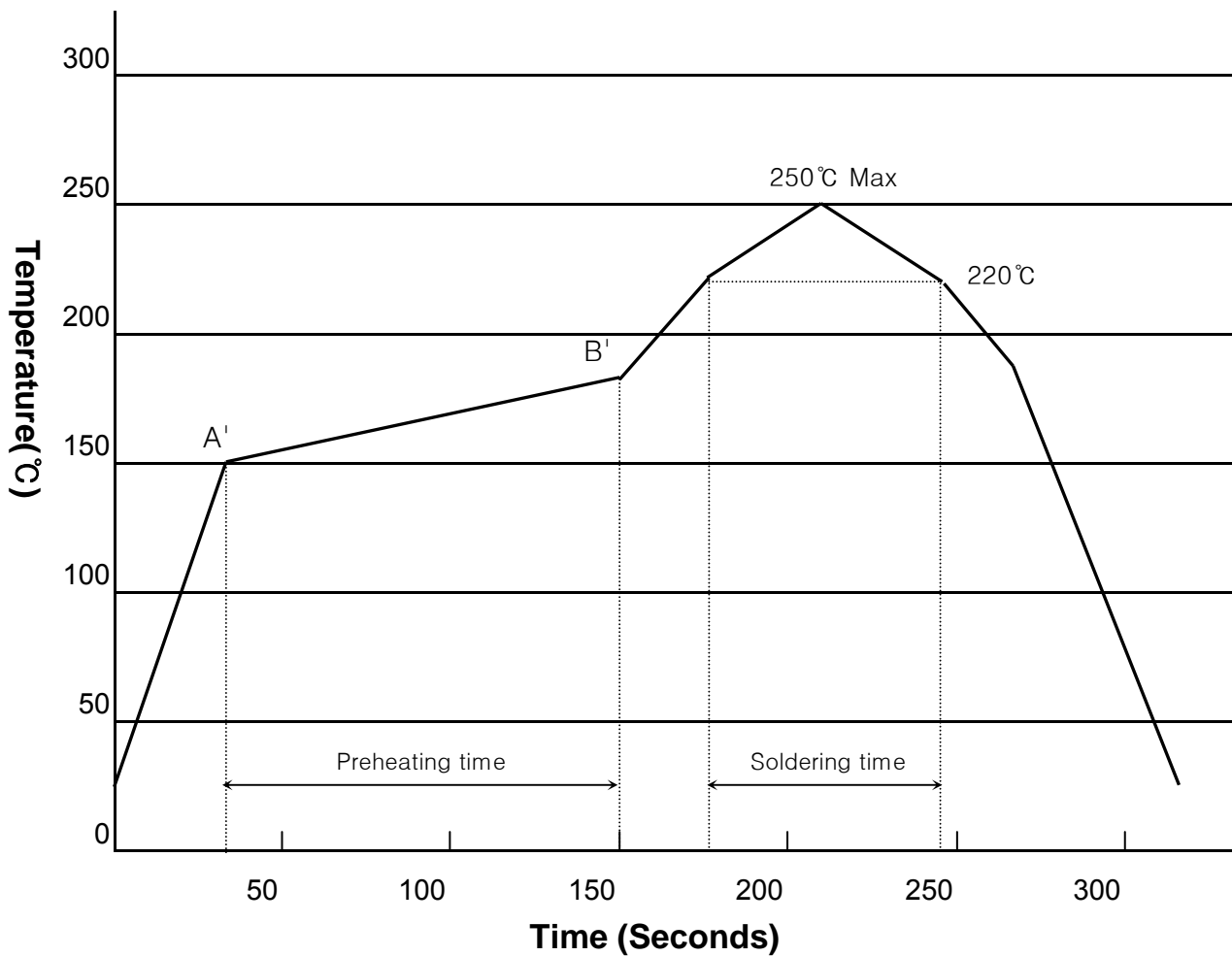
■ KN16-2830SCF



Product Name	Wire Size	Package	Remark
KN16-2830SCF	AWG28~30	Reel	10,000pcs/Reel

■ Reflow Profile

Using Lead-free Solder Paste



Recommended Application Conditions

Reflow System: IR reflow

Solder: Cream type Sn / 3 Ag / 0.5 Cu

Flux content 11%wt

Metal mask thickness: 0.15mm

Preheating time: 150°C~190°C, 90±30seconds

A'=150°C~170°C, B'=170°C~190°C

Soldering time: 250°C Max

220°C Min, 30~60 seconds