

Hirose Korea Board To Wire Connector

KN37-Series

contents

1.Characteristic of Products -----page 2

2.Specifications & Formation of Products -----page 3

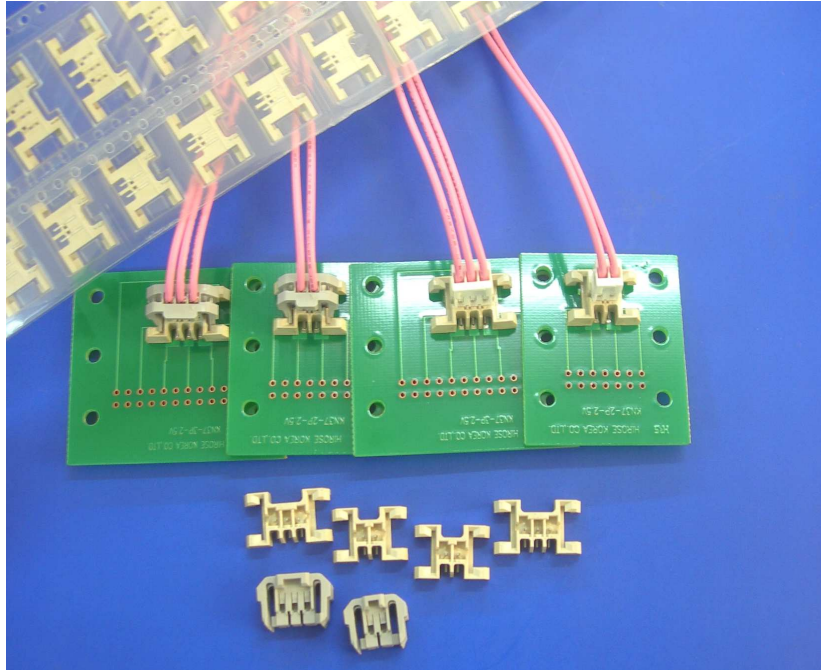
3.Details of Products -----page 4-

| No. | Products Name | NO. of Contact | Specification | page |
|-----|---------------|----------------|------------------------------|------|
| 1 | KN37-**P-2.5V | 2, 3 | Pitch :2.5 Height : 4.2mm | 4 |
| 2 | KN37-**S-2.5C | 2, 3 | Pitch :2.5 Height : 4.2mm | 5 |
| 3 | KN37-2428SCF | - | AWG#24~#28 | 5 |

4.Reflow profile ----- page 6

KN37 - SERIES

2.5mm PITCH, Board To Wire CONNECTOR



■ **Features**

1. Housing Lock Type

The Lock shape set up both Housing and Pin Header. so Housing Lock assures pow

2. High contact reliability

2 Contact Point assures highly reliable electrical and mechanical connection at Pin Header Contact and Crimp Contact.

3. Vertical Type

Stackng height mating of Pin Header : 4.2mm

Stacking height mating with a Housing : 11mm

4. Correspond automatic Mounting

It has the mold cap for absorption area, so it is available to autimatic mounting.

5. Jig Housing additions for inspection process

Jig Housing don't have a Lock for easy inspection process.

6. Halogen Free

It's a halogen-free product comply with environmental regulations.

■ **Applications.**

Inner connection as Board To Wire Connector FOR Electronic Equipment -LCD, PDP etc.
for DISPLAY & note PC etc. Electronic Equipment.

■ Specifications

| | | | |
|--------|-----------------|-----------------------------|---------------------------|
| Rating | Current 1A DC | Operating temperature range | Storage temperature range |
| | Voltage 500V AC | - 35 °C ~ + 85 °C | - 10 °C ~ + 60 °C |

| Item | Specification | Condition |
|--------------------------------|--|--|
| 1.Insulation Resistance | 1000MΩ Min | Measured at 500V DC |
| 2.Withstand voltage | Neither shot or insulation beakdown | 1500V AC for 1 minute |
| 3.Contact Resistance | 40mΩ Max | 20mA Max, Measured at AC 1mA |
| 4.Mechanical operation | Contact Resistance : 40mΩ Max | 50 Time insertions and extractions. |
| 5.Moisture Resistance | Temperature : 40±2°C | Contact Resistance : 40mΩ Max Insulation Resistance : 500MΩ Min |
| | Relative Humidity : 90~95 % | |
| | Duration : 96Hr | |
| 6.Resistance to Soldering heat | Reflow : 220°C MIN. 50~70s, 240±5°C 20±5s | No deformation of components affecting performance. |

■ Plating specifications and row materials by parts

| Part | Material | Finish | Remarks |
|-----------------------------|---------------|-----------------|-------------------|
| Pin Header | Case | LCP | UL94V-0, Natural |
| | Contact | Brass | Sn plating(Ni+Sn) |
| | Metal fitting | Phosphor bronze | Sn plating(Ni+Sn) |
| | Mold Cap | POLYAMID | Black |
| Crimp Socket | insulator | POLYAMID | UL940V0, Gray |
| Crimping Contact for Socket | Contact | Phosphor bronze | Sn plating |

※ Since Satisfy with Reflow Temperature MAX 250°C, Fit for use at Pb-free Soldering.

※ RoHS Compliant Suitable.

※ Halogen Free product.

■ Formation of part number.

● Connector **KN37** - ****** **P** - **2.5** **V**
 ① ② ③ ④ ⑤

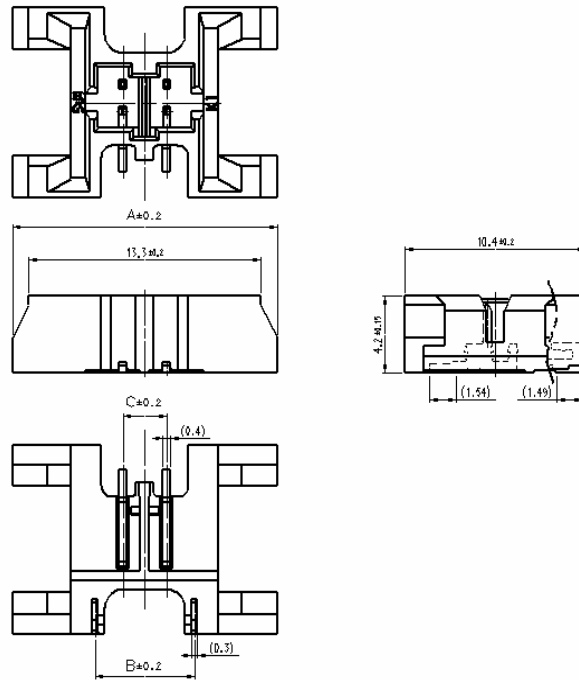
| | | |
|---|------------------|---------------------------------|
| ① | Serial Name | KN37 |
| ② | NO. of Contact | 2, 3 PIN |
| ③ | Contact Division | P : PIIN HEADER S : SOCKET |
| ④ | Contact Pitch | 2.5mm |
| ⑤ | Contact type | V(SMT : vertical mount type) |
| | | C(Crimping socket) |

● Contact **KN37** - **2428** **SCF**
 ① ②

| | | |
|---|-----------------------|---------------------------|
| ① | Applicable cable size | 2428 : AWG 24~28 |
| ② | Packing Type | SCF : Socket contact/reel |

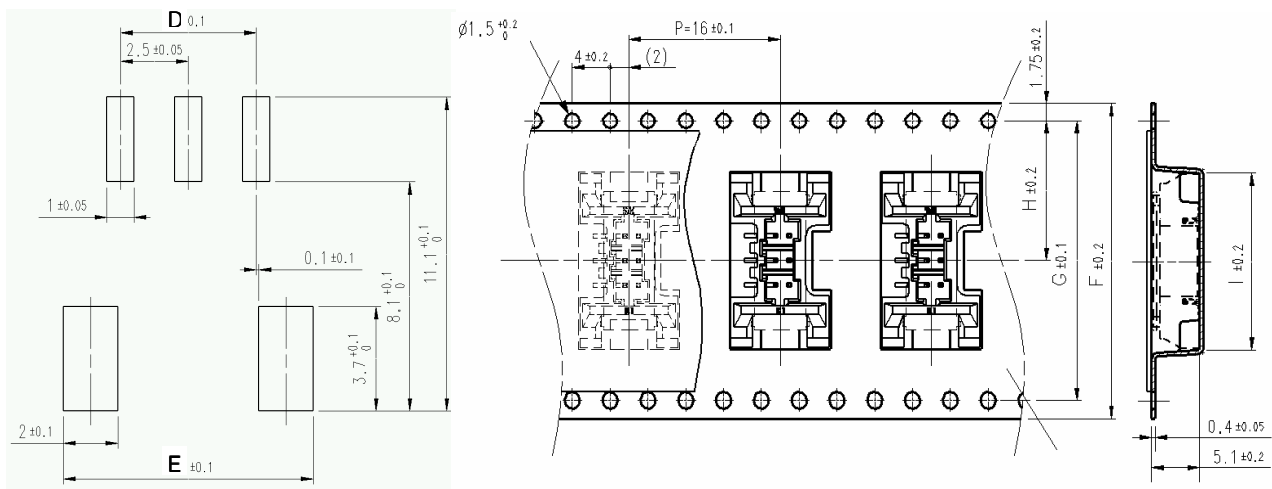
■ KN37-SERIES (Pitch=2.5mm)

● Pin Header



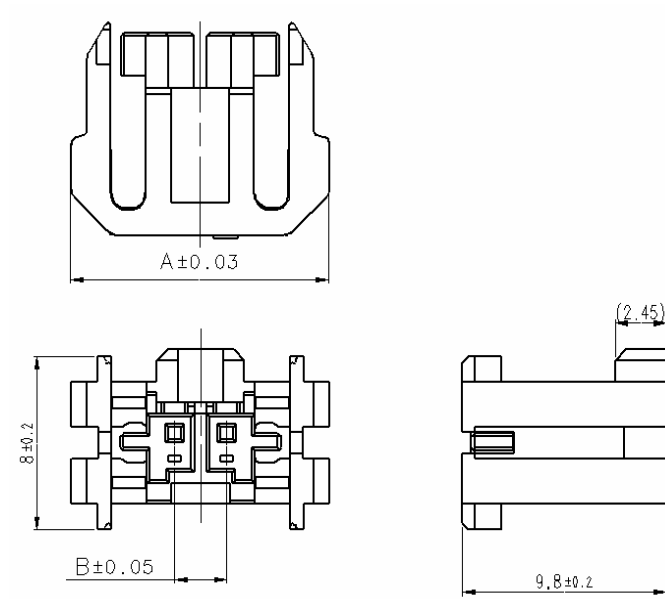
| Product Name | CL NO. | NO. of Pin | A | B | C |
|--------------|-------------|------------|------|-----|-----|
| KN37-2P-2.5V | 6621-0086-6 | 2P | 15.2 | 5.7 | 2.5 |
| KN37-3P-2.5V | 6621-0087-9 | 3P | 17.7 | 8.2 | 5 |

● PCB Layout & Taping Dimensions



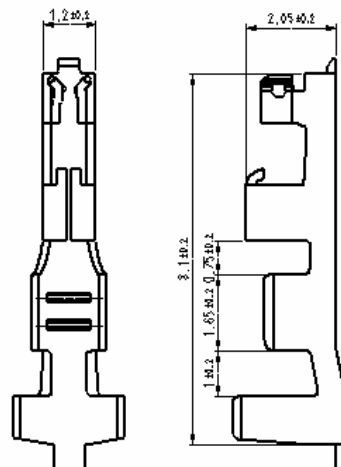
| Product Name | NO. of Pin | D | E | Product Name | NO. of Pin | F | G | H | I |
|--------------|------------|-----|-----|--------------|------------|----|----|------|------|
| KN37-2P-2.5V | 2P | 2.5 | 7.7 | KN37-2P-2.5V | 2P | 24 | — | 11.5 | 15.5 |
| KN37-3P-2.5V | 3P | 5 | 9.2 | KN37-3P-2.5V | 3P | 32 | 28 | 14.2 | 18 |

● Crimping Socket



| Product Name | CL NO. | NO. of Pin | A | B |
|--------------|-------------|------------|------|-----|
| KN37-2S-2.5C | 6621-0088-1 | 2S | 12.4 | 2.5 |
| KN37-3S-2.5C | 6621-0089-4 | 3S | 14.9 | 5 |

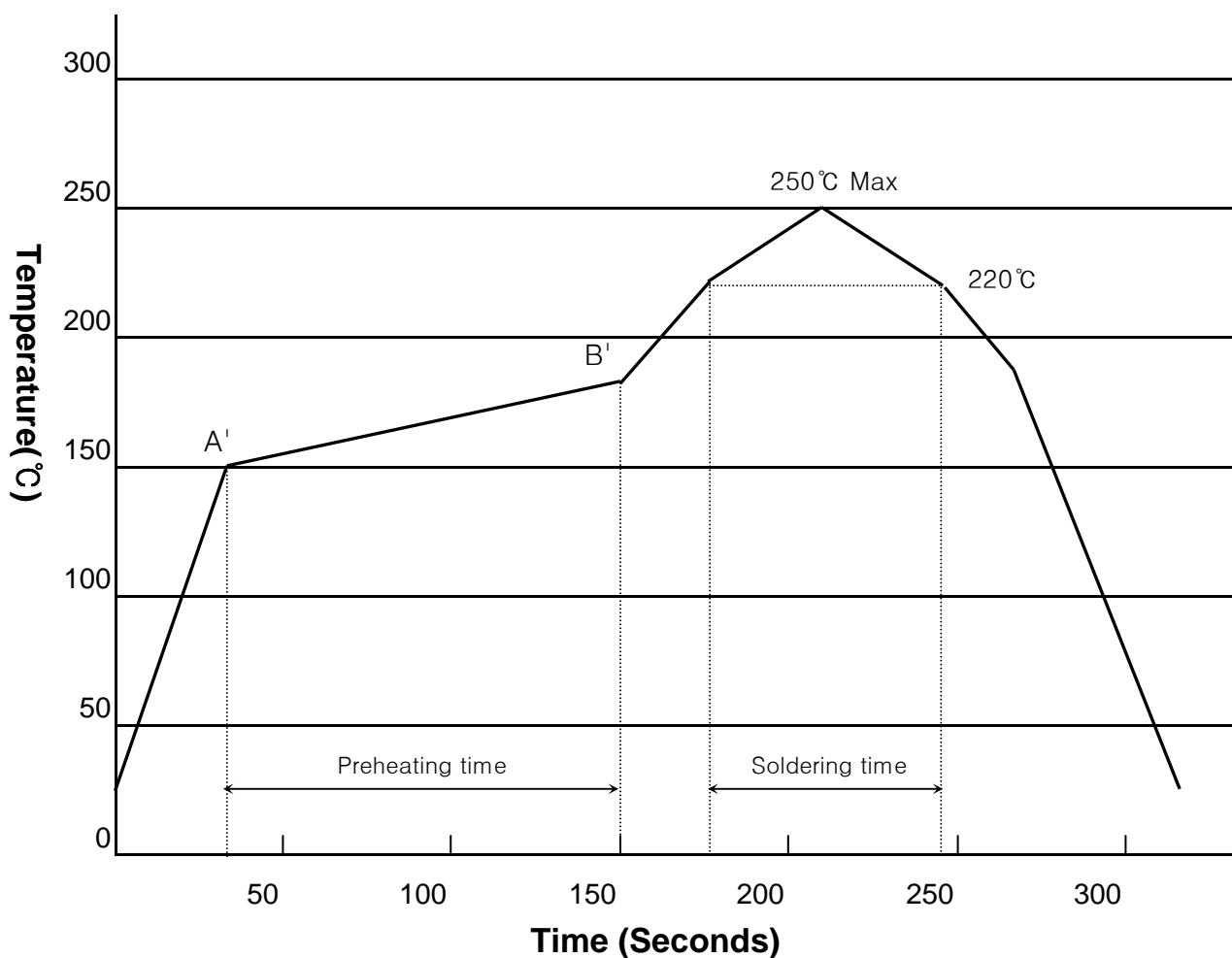
● Crimping Contact



| Product Name : KN37-2428SCF | | |
|-----------------------------|-------|--|
| Applicable Cable | AWG24 | Jacket Diameter : ϕ 1.57~1.7mm |
| | AWG26 | |
| | AWG28 | |

■ Reflow Profile

Using Lead-free Solder Paste



Recommended Application Conditions

Reflow System: IR reflow

Solder: Cream type Sn / 3 Ag / 0.5 Cu

Flux content 11%wt

Metal mask thickness: 0.12mm

Preheating time: 150°C ~ 190°C, 90±30seconds

A'=150°C ~ 170°C, B'=170°C ~ 190°C

Soldering time: 250°C Max

220°C Min, 50~70 seconds